



THE UNIVERSITY OF PITEȘTI

Student Guide



I. WELCOME TO ROMANIA!

- 4 Romania - A European country!
- 8 Getting to Pitești - Argeș
- 10 Useful information before departure:
 - Romanian money
 - Banking
 - Cost of living
 - Climate and clothes
 - Mobile phone

II. THE UNIVERSITY OF PITEȘTI

- 16 Why the University of Pitești?
- 19 Studying at the University of Pitești
- 10 Study programmes
- 36 How to apply:
 - Admission for EU Citizens
 - Admission for NON-EU citizens
 - Admission for Romanians' Everywhere
 - The Preparatory Year of Romanian
 - Language for Foreign Citizens
- 42 Fees and scholarships
- 44 Erasmus+ Office
- 45 The Academic Year
- 46 Visa and Work Permit
- 47 UPIT Campus
- 48 Library and Reading Halls
- 49 The Centre for Counselling and Career Orientation
- 50 Research Centres
- 52 Halls of Residence

III. DISCOVERING PITEȘTI & ARGEȘ

- 53 Pitești and Argeș County
- 54 Public Transportation/ Taxis
- 55 Cultural institutions
- 58 Cultural events
- 59 Pitești and of the places nearby
- 60 Accommodation & Restaurants & Cafés
- 62 Leisure time
- 64 Shopping centres and souvenir shops
- 65 Organizations
- 66 Health - Medical services

IV. CONTACT



1

Romania – A European country!

WELCOME
TO
ROMANIA!

- If you are thinking of studying in Romania, you might want to learn more about it!
- What kind of country is it?
- What are the advantages to study in Romania?

Let's start with a little bit *of history...*

On January 1, 2007, Romania became a Member State of the European Union, thus marking the end of an intense stage of reforms economic well as and institutional preparation as the beginning of a new stage of economic development.

- Membership involves both rights and obligations. All this derives from the treaties and legislation adopted by the European Union.



Brief history of relations between **Romania** and the **European Union**:



- * February, 1993 - Romania signs the European Agreement, which establishes an association between Romania, on the one hand, and the European Communities and their Member States, on the other hand;
- * June, 1995 - Romania submits the application to join the European Union;
- * February - the European Agreement enters into force;
- * July, 1997 - The European Commission adopts Agenda 2000, which includes the Opinion on Romania's application for membership of the European Union;

- * November, 1998 - The European Commission publishes the first Country Report on the process of Romania's accession to the European Union;
- * December, 1999 - in Helsinki, the European Council decides to start accession negotiations with six candidate countries, including Romania;
- * June, 1999 - Romania adopts the National Plan for Accession to the European Union;

- * **February, 2000** - at the meeting of the EU General Affairs Council, dedicated to the launch of the Intergovernmental Conference, the accession negotiations with Romania are officially opened;
- * **December 12-13, 2002** - The Copenhagen European Council decides on the accession of 10 new Member States and adopts roadmaps for Romania and Bulgaria;



- * **November 20** - The European Parliament considers January 1, 2007 as the target date for Romania's accession to the European Union;
- * **November 13** - Commission adopts a "Roadmap" for Romania and Bulgaria;
- * **March 26, 2003** - The European Commission presents the revised edition of the Accession Partnership with Romania;
- * **December 17, 2004** - at the European Council in Brussels, Romania receives the political confirmation of the conclusion of the conclusion of the accession negotiations to the European Union;



Capital: Bucharest

Official language: Romanian

Currency: Romanian leu (RON)

Schengen Area: Romania is currently in the process of joining the Schengen area

Area: 238.390 km²

- * **April 25, 2005** - in an official ceremony, held at the Neumunster Abbey in Luxembourg, the President of Romania, Traian Basescu, signs the Treaty of Accession to the European Union; April 13 - The European Parliament gives the green light to the accession of Romania and Bulgaria to the European Union;
- * **January 1, 2007** - Romania becomes a member of European Union;
- * **June 4-7, 2009** - the first elections for the European Parliament in which Romania participates as a member state. 33 MEPs are elected, more than two thirds of whom are members of the EPP (European People's Party) and the PSE (European Social Democratic Party);
- * **May 22-25, 2014** - elections for the European Parliament. The Romanian delegation includes 32 members, one less than in the previous legislature. Half of the MEPs are part of the PES group; January 1 - end of the transition period regarding restrictions on access to the EU labour market for Romanian workers;
- * **January-June, 2019** - Romania held, for the first time, the rotating Presidency of the Council of the European Union.

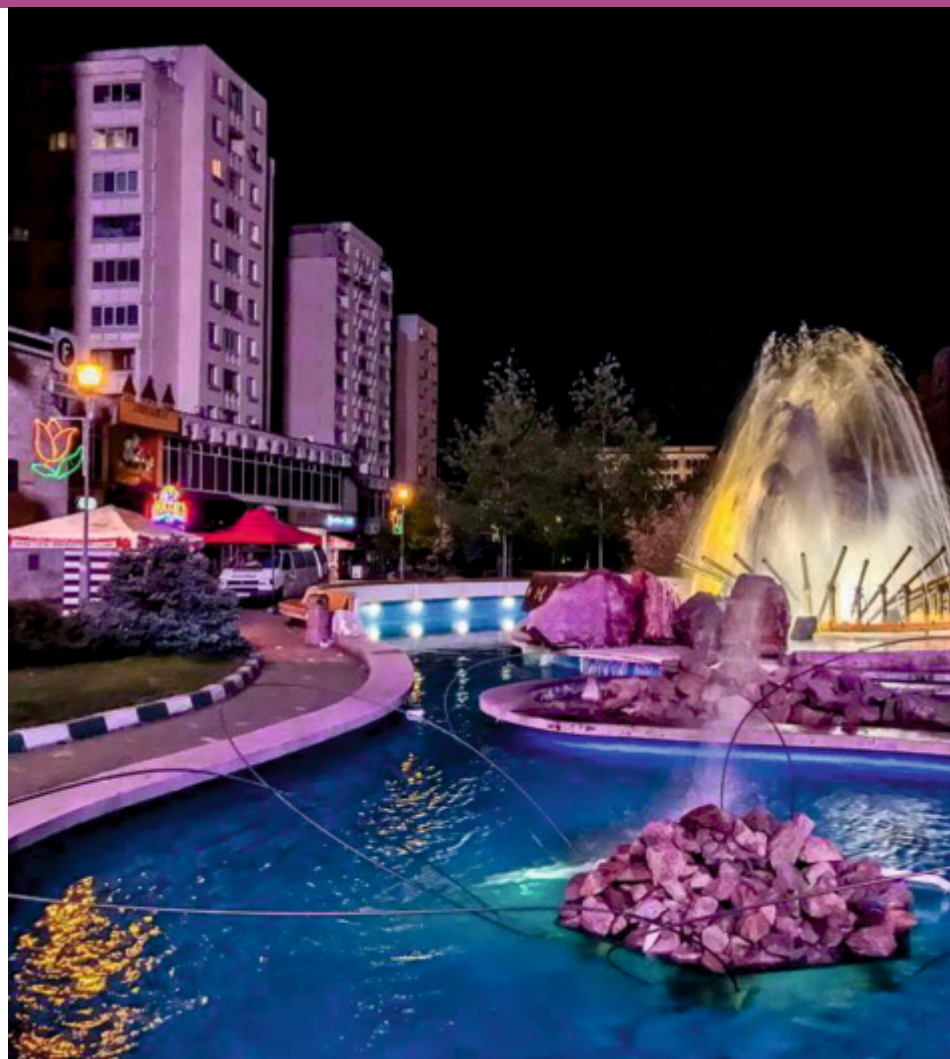
Getting to Pitești

How will you find us? Your choice, but get informed first!

Pitești is located at almost **120 km** from **Henri Coandă Airport**. When you arrive there, take either a taxi or the bus **no. 780** or the fast connection train which takes you to the North Train Station (GARA DE NORD) in Bucharest. Then, you take the direct train to Pitești.

- * **Buses:** we recommend the bus **no. 780** which reaches the North Railway Station in Bucharest, then you will take the train to Pitești. If you want to get to Bucharest city centre from the airport to visit it, you will take bus **no. 783**.
- * **Trains:** you can travel around the country by train. A fast connection train between **Henri Coandă Airport** and Bucharest North Railway Station runs **24 hours** a day, every **40 minutes**. The duration of the trip is approx. **20 minutes**.

<https://www.seat61.com/stations/bucharest-nord.htm>





✧ **Private cars:** The **A1** motorway starts in the western part of Bucharest and connects the capital with other cities, Pitești included. The shortest route takes **1 hour and 56 minutes**, and the longest one takes **2 hours and 52 minutes**. We usually recommend private transport, booked, because it is easier, faster and more comfortable for all participants. The car costs **80 EUR/** one way. The cost will be divided by the number of passengers. Your private car will take you from the airport directly to the location you indicate in Pitești.

✧ **Taxis:** Another option would be a taxi from the airport (it could be a little expensive). Taxis are very accessible in Romania, the price is **0.4 to 0.7 Euro/ km**. In order to avoid being charged excessively, always use official taxi companies; also, always ask for the meter to run and for a receipt at the end of your trip. Please bear in mind the fact that taxi apps are now a popular way of ordering quality taxis (look for **Bolt** or **Uber**)

Learn more:

✧ **buses:** <http://www.bucharestairports.ro/en/transport/bus>
 ✧ **trains:** <https://www.cfrcalatori.ro/en/>
 ✧ **private cars:** <https://www.cfl.ro/en/>
 ✧ **taxis:** <http://taximondial.ro/index-en.php>

3

Useful
information
before
departure

Are you ready?

Then, you should learn more about the Romanian money, banks, cost of living, climate or mobile phone network!

- **Romanian currency**

The basic unit of Romanian currency is the Romanian LEU (LEI, plural) also known as RON. For the rate exchange, please visit the National Bank of Romania's website.

- **Banking**

In Romania, banks are available in the entire country and we advise you to open a bank account when you arrive.

It is advisable to ask directly the bank to find out what the necessary documents are. The banks have a good ATM (automatic teller machines) network covering the country, thus you have the option to withdraw your money when travelling.

Please check the <http://www.banknews.ro/utile/info-banci-comerciale-romania.php> to view the banks operating in Romania.

E-banking is also widespread and you can increasingly make payments directly by card.



- **BCR Banca Comercială Română**
(<https://www.bancibancomate.ro/filiale-unitati-agentii/bcr-banca-comerciala-romana/arges/pitesti>)
- **BT Banca Transilvania** (<https://www.bancatransilvania.ro/retea-bancomate/Arges/>)
- **BRD Groupe Société Générale**
(<https://www.bancatransilvania.ro/retea-bancomate/Arges/>)
- **CEC Bank România** (www.cec.ro)
- **BCC Banca Comercială Carpatica**
(<https://www.bancibancomate.ro/banca-comerciala-carpatica-bcc-sucursala-pitesti>)
- **Raiffeisen România** (www.raiffeisen.ro)
- **Alpha Bank România** (www.alphabank.ro)
- **Banca Românească**
(<https://www.vreaucredit.ro/sucursale/sucursala-banca-romaneasca-pitesti-823/>)
- **Credit Europe Bank** (www.crediteeurope.ro)



Cost of living:

We are aware that the general living costs are important for your financial planning, so we provide below a list of costs associated with every day living in Romania.

Accommodation:

- Shared Rental - **100 Euro to 200 Euro/ month**
- Private Housing/ Rental - **200 Euro to 350 Euro/ month**

Other living expenses:

- **Food** (canteen/ groceries/ eating out) - **150 Euro to 350 Euro/ month**
- **Car maintenance** (after purchase) - around **100 Euro/ month**
- **Gas, Electricity** - **60 Euro to 80 Euro/ month**
- **Phone and internet** - **20 Euro to 40 Euro/ month**
- **Medical insurance** - from **12 Euro/ month** (either private or at CNAS - The National Health Insurance company, state owned)
- **Public transportation** - **10 to 30 Euro/ month**
- **National transport** - a train or bus ticket for a **300 Km** distance is around **15 - 30 Euros**
- **Entertainment** - **200 Euro/ month**





Climate

Be prepared! The average annual temperature varies, with January average of -2.4°C and August of $+30^{\circ}\text{C}$.

Atmospheric precipitation exceeds the country average, oscillating between 680 and 700 mm per year.

With a temperate climate, four distinct seasons, 210 sunny days per year, people enjoy the beauty of all seasons in Romania. You will find plenty of things to do in all the seasons if you are in Romania!

Spring in Romania is very pleasant with cool mornings and nights and sunny days.

Temperature can vary during the day between 6°C in the morning and 20°C in the afternoon.

Summer is quite warm, with extended sunny days. The hottest areas in summer are the lowlands in Southern and Eastern Romania where 35°C are often reached in July and August.

The low level of humidity makes the temperatures rather bearable for the most part. Temperatures are always cooler in the mountains.

Summer is quite warm, with extended sunny days. The hottest areas in summer are the lowlands in Southern and Eastern Romania where 35° C are often reached in July and August.

The low level of humidity makes the temperatures rather bearable for the most part. Temperatures are always cooler in the mountains.

Autumn in Romania is dry and cool, with fields and trees producing colourful scenery. September, especially, is one of the best months to visit the country due to pleasant weather and lower prices for accommodation.

Winter in Romania. There are significant differences between various regions of Romania. It can be cold, especially in the mountains.

While not the rule, abundant snowfalls may occur throughout the country, from December to the first half of March. Snow cover is continuous at higher altitudes from early December through early April. But, the winter sports fans will be delighted.





Mobile phone

It is advisable for you to purchase a SIM card or a Romanian mobile number when you arrive in Romania, as using your home phone number will incur high costs.

There are two types of mobile phone accounts you can choose from: prepaid or contract.

- **A prepaid service** gives you flexibility because you control how much you spend and can stop using the service any time. Nonetheless, you can also find good options if you choose contract.
- If you think that bureaucracy is annoying in Romania, note that getting **a phone subscription** is very easy, and you can sign one on the spot at the most mobile phone company branch offices.

To view the mobile phone carriers operating in Romania, please see the *List of mobile network operators in Romania*, you will find their stores all over Romania's cities.

Vodafone: <https://www.vodafone.ro/>

Orange: <https://www.orange.ro/>

Digi: <https://www.digi.ro>

1

Why
the
University
of
Pitești?

II
The
University
of
Pitești

Do you want to know us better?

The University of Pitești (**UPIT**) is a public and accredited institution of higher education, established in **1962**, awarded with the High Degree of Confidence in the national ranking rating.

UPIT has a strong collaboration with more than 230 universities from EU Member-States and NON-EU countries having an increasing number of partners on all continents for undergraduate or postgraduate studies, Erasmus+ mobilities, research-development-innovation projects or conferences and scientific journals.



UPIT is a member of several notable international professional and academic institutions:

Agence Universitaire de la Francophonie (AUF)

European University Association (EUA)

Danube Rectors' Conference (DRC)

European Distance and E-Learning Network (EDEN)

European Forum of Technical and Vocational Education and Training (EfVET)

Association for Teacher Education in Europe (ATEE)

Conseil Européen pour les Langues / European Language Council

UPIT means

over 8.000 students

over 300 teachers and researchers

over 300 administrative staff

6 faculties

51 Bachelor's Programmes

50 Master's Programmes

10 Doctoral fields in 4 doctoral schools

Further information: <https://international.upit.ro>
<https://www.upit.ro>

2

Studying at the University of Pitești

Studies at the University of Pitești are organized and implemented in the framework of the Bologna Declaration.



1. The Bachelor's Programme completed in 6/ 8 semesters (3/ 4 academic years)

2. The Master's Programme is completed in 4 semesters (1.5/ 2 academic years)

3. The Doctoral Programme degree (PhD) is completed in 6 semesters (3 academic years)

- Course attendance might be compulsory (50-100%) for some of the course units. You are expected to participate actively and attend class regularly.
- Students are usually required to take a final examination which can be done in written form or through oral assessment, depending on the course.
- Attendance, assignments and class participation are also considered part of the final mark.

How does it work?

Bachelor's Programmes (the undergraduate degree study programmes) are either financed from the state budget or paid by the students by means of a tuition fee).



- the first cycle of university studies
- **Study Credits:** a minimum of **180** and a maximum of **240** transferable study credits, according to ECTS/ SECT
 - a minimum of **60** transferable study credits (ECTS) for one year of studies
- **Level of Qualification:** level **6** of the EQF/ CEC and the National Qualifications Framework
- **Duration:** **3-4** years
 - the duration of undergraduate studies for university education in the fields of engineering, legal sciences and pastoral theology is **4** years
- **Admission:** the high school graduates with a baccalaureate degree or equivalent can participate in the admission to the first cycle of university studies
- **Completion:** the bachelor's degree programmes are completed with a bachelor's exam for the bachelor's degree cycle or a diploma exam for the bachelor's degree in engineering

How does it work?

Master's Programmes (the master university studies are either financed from the state budget or paid by the students by means of a tuition fee).



- the second cycle of university studies
- **Study Credits:** a minimum number of transferable study credits, between **60** and **120**
- **Level of Qualification:** level 7 of the EQF/ CEC and the National Qualifications Framework
- **Duration:** **1-2** years
- **Admission:** the graduates with a bachelor's degree or equivalent can apply for master's degree programmes
- **Completion:** the master's degree programmes are completed by defending the dissertation

How about becoming one of the best in the field?

How does it work?

Doctoral university studies



- the third cycle of university studies
- **Level of Qualification:** level **8** qualification from the EQF/ CEC and from the National Qualifications Framework
- **Duration:** usually **3** years
- **Admission:** only graduates with a master's degree or its equivalent
- **Completion:** the doctoral university study programs are completed by the public defence of the doctoral thesis. After the validation of the doctoral thesis, the title of doctor is awarded by order of the Minister of Education

3

Study Programmes

Bachelor's Degree

BACHELOR'S DEGREE

Faculty of Mechanics and Technology

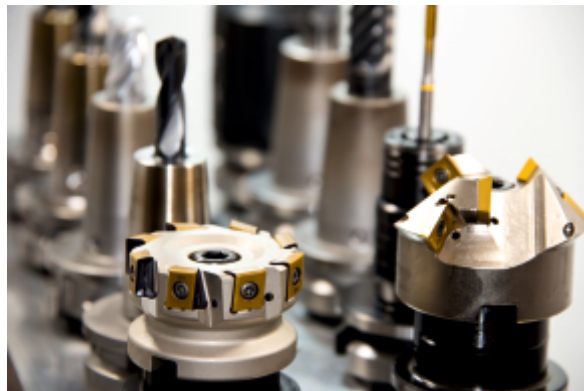
Engineering

Road Vehicles

Manufacturing Engineering

Industrial Economic Engineering

Traffic and Transport Engineering



3

Study Programmes

Bachelor's Degree

BACHELOR'S DEGREE

Faculty of Electronics, Communications and Computers

Computer Science

Computer Science

Electrical Engineering

Electromechanics

Electronic Engineering, Telecommunications and Information Technologies

Networks and Software for Communication
Applied Electronics



3

Study Programmes

Bachelor's Degree

BACHELOR'S DEGREE

Faculty of Economics and Law

Economics, Business and Management

- * Business Administration
- * Economics of Trade, Tourism and Services
- * Economics of Trade, Tourism and Services (distance courses)
- * Finance and Banking
- * Accounting and Management Information Systems
- * Accounting and Management Information Systems (distance courses)
- * Management
- * Management (distance course)



Law and Administrative Studies

- * Law
- * Law (distance course)
- * Public administration



3

Study Programmes

Bachelor's Degree

BACHELOR'S DEGREE

Faculty of Sciences, Physical Education and Informatics

Mathematics and Environmental Sciences, Horticulture

- * Mathematics
- * Informatics
- * Chemistry
- * Medical Chemistry
- * Ecology and Environmental Protection
- * Horticulture



Engineering

- * Energetics and Nuclear Technologies
- * Environmental Engineering



Biological and Health

- * Biology
- * Nursing

Psychology

- * Occupational Therapy



Sports Science and Physical Education

- * Physical Therapy and Special Motricity
- * Physical Education and Sports
- * Sports and Motor Performance

3

Study Programmes

Bachelor's Degree

BACHELOR'S DEGREE

Faculty of Theology, Letters, History and Arts

Philology

- * Romanian Language and Literature - A Modern Language and Literature for French/ English
- * English Language and Literature - A Modern Language and Literature for French/ Spanish/ German
- * Applied Modern Languages (English-French)

Theology

- * Orthodox Theology and Social Work

History and Philosophy

- * History

Arts

- * Music
- * Sacred Art
- * Performing Arts (acting)



3

Study Programmes

Bachelor's Degree

BACHELOR'S DEGREE

Faculty of Education Sciences, Social Sciences and Psychology

Education Sciences

- * Pedagogy of Primary and Pre-primary Education (Pitești)
- * Pedagogy of Primary and Pre-primary Education (Alexandria)
- * Pedagogy of Primary and Pre-primary Education (Câmpulung)
- * Pedagogy of Primary and Pre-primary Education (Râmnicu Vâlcea)
- * Pedagogy of Primary and Pre-primary Education (Slatina)

Social Sciences and Psychology

- * Social Work
- * Psychology
- * Journalism
- * Human Resources



3
**Study
Programmes**

**Master's
Degree**

MASTER'S DEGREE

Faculty of Mechanics and Technology

Transport and Road Security

- * Transport and Road Security

Automotive Engineering

- * Automotive Engineering for Sustainable Mobility
- * Design and Management of the Automotive Projects

Industrial Engineering

- * Materials Science and Technology (interdisciplinary)
- * Engineering and Management of Products Manufacturing

Engineering and Management

Logistics Management



3

Study Programmes

Master's Degree

MASTER'S DEGREE

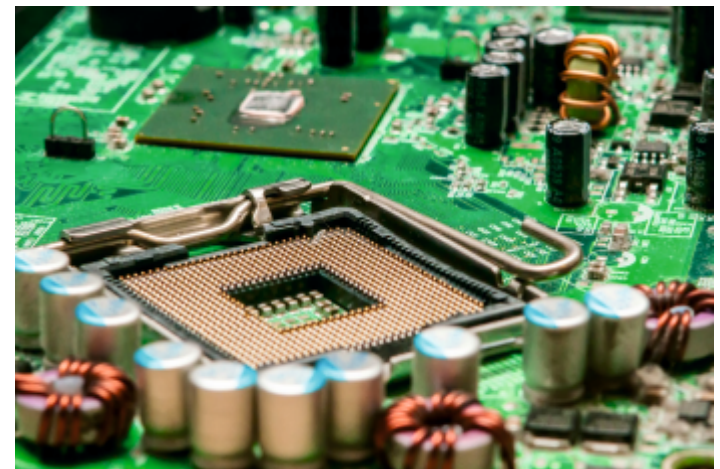
Faculty of Electronics, Communications and Computers

Electronic Engineering, Telecommunications and Information Technologies

- * Electronic Systems for Management of Industrial Processes
- * Electronic Engineering and Smart Systems

Electrical Engineering

- * Energy Conversion Systems



3

Study Programmes

Master's Degree

MASTER'S DEGREE

Faculty of Economics and Law

Economics, Business and Management

- * Business Administration in Trade, Tourism and Hospitality
- * Management Accounting and Auditing
- * Accounting Management and Information Systems
- * European Economics and Finances
- * Financial-Banking and Insurance Management
- * Strategic Management of Human Resources
- * Strategic Management and Business Development (in English)



Administrative Sciences

- * Public Administration and European Integration

Law and Administrative Studies

- * Juridical Careers
- * Contentious Law



3
**Study
Programmes**
Master's
Degree

MASTER'S DEGREE

Faculty of Sciences, Physical Education and Informatics

Mathematics

- * Didactic Mathematics

Informatics

- * Advanced Techniques for Information Processing (in English)

Environmental Sciences

- * Monitoring and Environmental Protection
(interdisciplinary with the fields: Horticulture and Biology)

Applied Engineering

- * Nuclear Materials and Technologies



Biology

- * Medical Biology

Chemistry

- * Forensics Chemistry

Sports Science and Physical Education

- * Physical Therapy for People with Disabilities
- * Curricular and Extracurricular Motor Activities
- * Organization and Management in Sports
- * Performance in Sports



3 Study Programmes Master's Degree

MASTER'S DEGREE

Faculty of Theology, Letters, History and Arts

Philology

- * Translation Studies - French/ English. Translations in the European Context
- * Current Tendencies in Romanian Language and Literature
- * Specialized Languages and Computer - Assisted Translation (interdisciplinary with Computer and Information Technology)

Theology

- * Apologetics and Confession
- * Ecumenism in the New European Context
- * Mission and Worship Through Sign Language
- * Restoration Work with Icon, Murals and Easel Painting
- * Systematic and Practical Theology. New Tendencies in Romanian Theology

History and Philosophy

- * Romania and the Romanians in the European Context (14th to 20th centuries)

Arts

- * Contemporary Musical Education



3

Study Programmes

Master's Degree

MASTER'S DEGREE

Faculty of Education Sciences, Social Sciences and Psychology

Education Sciences

- * Educational Management (Pitești, Slatina)
- * Educational Counselling
- * Early Education (Alexandria, Râmnicu Vâlcea)

Social Sciences and Psychology

- * Clinical Psychology - Assessment and Intervention
- * Organizational Communication
- * Social Work Counselling
- * Health and Social Services Management



3

Study Programmes

Master's Degree

DOCTORAL SCHOOLS

Doctoral School of Philology

Doctoral School of Sports Science and Physical Education

Doctoral School of Automotive Engineering

Interdisciplinary Doctoral School:

- * Materials engineering
- * Electronics, communication and information technologies
- * Industrial engineering
- * Mathematics
- * Informatics
- * Biology



4
How
to
apply

ADMISSION FOR EU CITIZENS

The **admission process** is available for:

citizens of the European Union,
Swiss Confederation and EEA

holders of residence permit based on
refugee or subsidiary protection status

holders of long-term/permanent residency
as family member of a Romanian or EU citizens

The **process** implies two steps:

1. obtaining the Certificate of Equivalence
from the National Centre for Recognition
and Equivalence of Diplomas

2. enrolling to the University of Pitești

Contact us: <https://international.upit.ro/admissions>

ADMISSION FOR NON-EU CITIZENS

The **admission process** is available for:

foreign citizens of NON-EU states

applicants with a graduation average of **minimum 60%** to each of the study diplomas (high school, respectively BA, MA, Ph.D., according to the study option after graduating the preparatory year).

The **process** implies two steps:

1. obtaining the Letter of Acceptance from the General Directorate for International Relations and European Affairs (DGRIAE)

2. enrolling to the University of Pitești

Contact us: <https://international.upit.ro/admissions>

ADMISSION FOR ROMANIANS EVERYWHERE

The **admission process** is available for:

Romanians Everywhere from: The Republic of Moldova, Albania, Bulgaria, Greece, Israel, Macedonia, Serbia, Ukraine, Hungary, Diaspora, in accordance with the legislation in force.

The **process** implies four steps:

1. submit the application files to the our university

2. each admitted candidate shall confirm only one place of study

3. obtaining the Approval for Scholarship from the Directorate-General for International Relations and European Affairs

4. enrolling to the University of Pitești

Contact us: <https://international.upit.ro/admissions>

THE PREPARATORY YEAR OF ROMANIAN LANGUAGE FOR FOREIGN CITIZENS

And if you do not know Romanian at all?

You may attend the Preparatory Year of Romanian Language for Foreign Citizens

The Preparatory Year of Romanian Language for Foreign Citizens means:

- **1 school/ academic year** of intensive Romanian as a foreign language
- **6 months, at least, for master's, doctoral and postgraduate university studies** for residency in medicine
- the **admission** at the UPIT follows the selection procedure of the application files.
- **150 places available** for applications every year.
- the **enrolment** of foreign citizens in higher education institutions is subjected to the same regulations and laws applicable to the Romanian citizens.



THE PREPARATORY YEAR OF ROMANIAN LANGUAGE FOR FOREIGN CITIZENS

Course Assessment

- the 1st semester - oral and written exams (reading, listening, speaking and writing) in order to determine the Romanian language proficiency: A1-A2 level

- the 2nd semester - oral and written exams (reading, listening, speaking, writing) in order to determine the Romanian language proficiency in specialized language: B1-B2 level



Course Graduation

The Preparatory Year of Romanian Language for Foreign Citizens is completed with a graduation examination consisting of:

- **assessment 1** - written exam (fundamental and specialized knowledge of the Romanian language)

- **assessment 2** - written graduation project :

- a) a Curriculum vitae of the graduate in Europass format (in Romanian)
- b) a written essay on Culture and Civilization.

All forms of assessment involve marks from 1 to 10, the minimum passing mark being 5.

Participation in the final exam of the Preparatory Year of Romanian Language.

The graduation certificate is conditioned by the passing of all the exams.

Graduation Certificate: successful candidates are awarded a Graduation Certificate allowing them to enrol at bachelor/ master/ doctoral degree programmes.

Contact us: <https://international.upit.ro/admissions>

HOW TO FIND US



UPIT's study offer can be accessed on online platforms:

- **Study in Romania** (<https://www.studyinromania.gov.ro>)
- **Master Studies** (<https://www.masterstudies.com>)
- **Uni Rank** (<https://www.4icu.org/>)
- **Ranking Web** (<http://www.webometrics.info>)
- **Study in Pitesti** (<https://studyinromania-pitesti.ro/>)

***** The Romanian Universities comply with the European Credit Transfer System (ECTS)**

1 semester = 30 ECTS credits

1 full academic year = 60 ECTS credits

To obtain ECTS credit points and grades, specific tasks such as a written/ oral examination, internships, different coursework activities must be completed at the end of a course.

An explanation of the grading system is included in the Transcript of Records given to every student.

5

Fees and scholarships

TUITION FEES

For the Non-EU citizens

Study domain	Bachelor/ Master/ Medical Residency Programmes EURO/ month	Postgraduate/ Doctoral programmes EURO/ month
technical, science, mathematics and sports	270	290
philology, psychology, economics	220	240
musical performance, theatre	750	770

↳ **Preparatory Year of Romanian Language for Foreign Citizens: 1980 Euros**

↳ **For EU citizens:** EU citizens pay the same fees as the Romanian students per academic year for undergraduate and postgraduate courses (bachelor's degree, master's degree or doctoral studies) and pre-university courses.

↳ This fees may be subjected to changes. Please see our website for updates.

Contact us: <https://international.upit.ro/admissions>

SCHOLARSHIPS

Scholarships are offered by the Romanian state to foreign citizens according to unilateral or bilateral agreements, via authorities in charge in the respective countries.

Foreign citizens may receive scholarships or grants on behalf of other states or international organizations.

Application Procedure for scholarships:

Ministry of Education:

<https://www.edu.ro/studenti%20non%20ue>

Ministry of Foreign Affairs: <https://www.mae.ro/en>



6

Erasmus+ Office

If you are looking for new experience, new people, new skills,
Erasmus + is what you really need!

The ERASMUS+ Office is part of the Centre for
International Relations (CpRI) of the University of Pitești.

The ERASMUS + Office at the University of Pitești is here to:

- ☺ assist you during the Erasmus+ selection process, if needed
- ☺ organize information/ counselling/ feedback sessions for UPIT/ Erasmus+ students and staff
- ☺ facilitate contacts with partner institutions in order to provide information on teaching/ training/ placement facilities and programmes
- ☺ plan your mobility at the University of Pitesti
- ☺ provide you with all the specific documentation in order to have the learning outcomes obtained as a result of the student mobility acknowledged
- ☺ help the students reintegrate when returning from the mobility.

Learn more <https://international.upit.ro/erasmus>



7

The academic year

Semesters and Holidays

- the academic year = **28 weeks: 2 semesters**
- the 1st semester : **October-January**
- the winter holidays-around Christmas and New Year
- winter exams - **January to February**
- a week of break between the 2 semesters
- the 2nd semester : **February - May**
- summer exams - **May to June**
- resit examinations - **September** (in order to catch up or to improve their marks) / **June** (for final-year students)



Legal Holidays

- * **30th of November - Saint Andrew**
- * **1st of December - National Day**
- * **25th-26th of December - Christmas**
- * **1st-2nd of January - New Year**
- * **24th of January - Unification Day**
- * **April - May - Easter (the date changes every year)**
- * **1st of May - Labour Day**
- * **1st of June - International Children Day**
- * **15th of August - Saint Mary, Mother of Jesus**

8

Visa and Work Permit

Visa and Work Permit

Based on the Letter of Acceptance/ Approval (and payments where requested), applicants will have to apply for the study visa at the Romanian Embassy in their country or at the closest Romanian diplomatic mission.

The visa application file must contain:

- letter of acceptance (original)
- proof of payment (original) for the paying students
- proof of housing
- passport
- 3 photos (3/4 cm)
- an envelope dossier.



If you have the right of temporary residence for studies, you may work under an individual labour contract for a part time job (up to 4 hours a day).

Additional information: Web: <http://igi.mai.gov.ro/munca/>

9

UPIT Campus



Library and Reading Halls



The University of Pitești includes two libraries situated in two of its buildings ("B" and Central Building) where students are welcome to stay and study.

More than **300.000** titles in all the fields of the university curricula.

You will find a variety of books and academic journals in Romanian, English, French, German and Spanish; there are collections in fields such as humanities, education, law, engineering, medicine, science, social sciences.

- **Access Point** to Information (PAI) implemented by L'Agence Universitaire de la Francophonie
- Access to the **European Documentation Centre** (EDC-UPIT)
- Access to different **scientific data basis**

- **Membership card:** You need a library membership card in order to borrow a book from the library or to read it on site.
- **Digital Content:** The Library is undergoing a digitalization process and you may get a selection of pages scanned upon demand by e-mail.
- **Copy & Scan:** library computers, copy/scan machines and printers can be used with the permission of the library staff during the working hours of the library (only for research and homework purposes).
- If you wish to bring your own laptop, you will find free Wi-Fi and plug socket for it to recharge at every library hall.



Opening hours

Mon, Wed - 08:00 - 16:00

Tu, Thurs - 10:00 - 18:00

Fri - 08:00 - 16:00

<http://cat-biblioteca.upit.ro/>

E-mail: biblioteca@upit.ro

Digital library: <http://tinread.upit.ro/opac?lang=eng>

11

The Centre for Counseling and Career Orientation

The Centre for Counseling and Career Orientation (C.C.O.C.) offers the beneficiaries (students of University of Pitești, regardless of the study programme or the education form, students who come to study through Erasmus + mobility programmes, students in the senior years of high school, their own graduates or of other universities) specialized services of:



- ↪ career counselling and guidance
- ↪ psychological counselling
- ↪ educational counselling
- ↪ development of skills for setting goals and objectives, for planning time and activities and for decision making
- ↪ counseling and mentoring for students with learning difficulties
- ↪ identifying educational opportunities (internships, scholarships and experience exchanges, etc.)
- ↪ assessing professional interests and skills, identifying opportunities for developing professional skills and competences
- ↪ trainings for the development of competences and skills that can increase the chances of labor market insertion



RESEARCH Centres

Faculty of Sciences, Physical
Education and Informatics

Faculty of Mechanics and
Technologies

Faculty of Electronics,
Communication and Computers

Faculty of Economics and Law

Faculty of Education, Social
Sciences and Psychology

Faculty of Theology, Letters,
History and Arts

The university offers wireless network access to students and staff across the campus facilities, so you can pursue your research activity wherever you need, according to your interests; there are different **research centres in the University of Pitești**:

Research Centre for Environmental Protection
Biotechnological Research Centre in Horticulture and Environmental Protection
Research Centre for Human Performance
Research Centre for Methods of Calculation and Methodologies of Programming
Optomat Research Laboratory

Research Centre for Automotive Engineering

Research Centre for Modelation and Simulation of Processes and Systems
ELECTROMET Research Centre

Research Centre for Analysis and Economic Modelation
Legal and Administrative Studies Research Centre

Research Centre for Promoting Excellence in Professional Training
PRO ED EXPERT-Scientific Research Centre in the Field of Applied
Psychopedagogy

Research Centre for Imaginary. Text, Speech, Communication - IMAGINES
Historical, Archeological and Patrimonium GH I. Brătianu Research Centre
Logos Centre
Applied Techological Study Centre
Immaterial Cultrimony Research Centre



- **The Regional Research and Development Centre** for innovative materials, processes and products for the automotive industry (CRC&D-Auto) was founded in 2016.
- Different permanent and temporary research activities, including research internships, take place here, being carried out by university professors, Ph.D. or Master students, but also by associated researchers.
- The centre includes activities in a wide range of fields such as bio-economy, energy, environment, econanotechnologies and advanced materials.



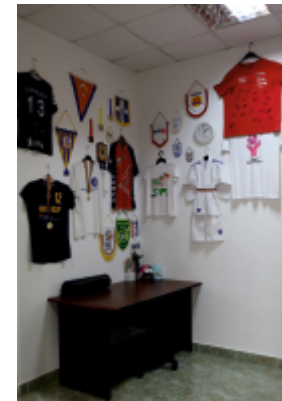
13 Halls of residence

- **700** accommodation places in rooms with 2/ 3 or 4 beds are available for you in student dormitories with:
 - equipped kitchens;
 - washing-machines;
 - TV and Wi-Fi Internet connection;
 - the cafeteria is located near UPIT Hall of Residence.
- the canteen provides a wide range of fresh food products at low prices daily;
- the accommodation fee is affordable



The University of Pitesti has a great multifunctional European sport centre. The students may spend their free time relaxing and practising different sports such as: tennis, football, handball, basketball, volleyball.

- If you want to improve your foreign language skills, you may study on your own in the brand-new Francophone Centre for Autonomous Linguistic Development or, simply, CFDLA.



1

Pitești and Argeș County

III DISCOVERING PITEȘTI and ARGEȘ

Do you want to get accustomed to the places?

- PITEȘTI is a multicultural city (Greek, French, Arab communities), located in the central-southern part of Romania, at **100 km** from **Bucharest**, the capital of **Romania**.
- **Pitești** is one of the cities in **Romania** that surprises with its tourist attractions full of history.
- Located in the central-southern part of the country, Pitești is the residence and largest city of Argeș County, Romania and has the reputation of the “Tulip City”, as it celebrates annually an important festival, the Tulip Symphony.
- On this occasion, you may see all around you flowers and especially tulips which colour the city centre for several days.



- It is connected to Bucharest by the A1 motorway (at a distance of 108 km), but also by the national road DN7, so if you want to reach Bucharest by car, it will take you only 60 minutes.
- The city is situated at the confluence of the Argeș River with the Doamnei River, between high hills, on the terraces of the Argeș river. It has a calm and moderate climate. The average annual temperature varies between 9° and 10° C; the average for January is -2.4° C, and the average for July is +20.8° C.

2

Public transportation/ taxis

Publitrans 2000 Pitești has bus routes operating throughout the city. The price of a bus ticket is **4 Lei (0.8 EUR)** - valid for two trips. Tickets are available at special stands, or directly on the bus by card.

Learn more: www.publitrans2000.ro

Taxis: One kilometre by taxi costs between **2** and **3 lei** (less than **0.6 EUR**). Big taxi companies have the name of the company and the phone number displayed on the top and on the sides of the taxi. You may also use taxi apps such as Bolt or Uber.

Learn more: <https://www.taximetre.ro/taxi/pitesti/>

Learn more:

<https://www.cfrcalatori.ro/en/>

<http://www.publitrans2000.ro/>

<https://www.autogari.ro/en>



Bolt Uber



3

Cultural institutions

If you are a culture addicted person, you have plenty of things to see in Pitești and in the surrounding area.

The Art Gallery is located in a 19th century building.

It holds 1100 works of classical and contemporary painting and sculpture. (<http://www.muzeul-judetean-arges.ro/sectiile-muzeului/galeria-de-arta>).

The National Gallery of Naive Art is the first museum of its kind in the country, Pitești being considered for more than 30 years a genuine capital of the Romanian naive art. Works of naive painting, sculpture and graphics are exhibited. (<http://www.muzeul-judetean-arges.ro/>).

Argeș County Museum, located in the city centre, in the building of the former Argeș Prefecture, dates back to the XIXth century. It has numerous collections belonging to different fields: archaeology (treasures dating back from the Roman era), history, numismatics, modern and contemporary art (paintings from the XIXth and XXth centuries and local graphics), natural sciences, but also a collection of books consisting of 18,000 volumes. (<http://www.muzeul-judetean-arges.ro/>).



- **The Musical Fountain** - is located in the City Centre; it was completed in 2008 for Europe's Day, a day celebrating peace and unity in Europe. The fountain is unique in the Eastern Europe with its 1,000 fixed and mobile water fountains and lights; the water pressure moves according to the tones of the music in the evening. (<http://www.informatii-romania.ro/listing/fantana-muzicala/>)
- **Alexandru Davila Theater** - is the only repertory theatre in the 3 nearby counties in the south of the country (Argeş, Teleorman, Olt). There are 3 sections: the Drama Section, the Children's and "Aşchiuță" Youth Sections. So, if you do want to enjoy a play and to improve your Romanian at the same time, you should take the opportunity to go to the theatre! (<http://www.teatruldavila.ro/>)
- **Dinicu Golescu Argeş County Library** - owns important collections of Romanian and foreign books, reference materials, newspapers and periodicals, audio-visual materials (cassettes and CDs) that maintain an encyclopaedic character. The staff is very kind, so, don't hesitate to ask for help! (<https://www.bjarges.ro/>)



- **Pitești Philharmonic** - If you are a music fan, you should not miss this place. For its public success, the Pitești Philharmonic was named by the local press as “the first violin of the Argeș culture”. Don't think it is only about classical music as you will be surprised!
(<http://www.filarmonicapitesti.ro/>)
- **The Princely Church** was built in the XVIIth century. Its architecture is a special one, which reflects the refinement reached by the art of ecclesiastical construction in Wallachia, at that time.
(<http://www.biserica-domneasca-pitesti.ro/>)

Cinemas: Do you need some time to relax?

You may go to watch a movie at the:

Cinema City (Vivo Mall) - www.cinemacity.ro

Cinema Trivale – www.cinematrivale.ro



4

Cultural events

If you like to walk in the street surrounded by a lot of people, you should go in the city centre during the fairs or exhibitions:

The Tulip Symphony (celebrated each year in April), Zavaidoc Old Fiddle Music National Festival (celebrated at the end of November), Autumn Fair (celebrated each year in October), Pitesti Days (celebrated each year in May), 3FEST Festival, "Carpathians" International Folklore Festival brings together ensembles from Romania and from other European countries.

Learn more: <https://simfonialalelelor.ro/>

5

Pitești and of the places nearby

If you are in Pitești, there are a lot of wonderful places to visit in the surroundings.

- **Curtea de Argeș Monastery** - a mixture of architectural styles (at about 35 km)
- **Vidraru-Transfăgărășan** - known as one of the most beautiful roads in Europe (60 km away)
- **Golești Museum** - an open-air museum preserving the XIXth century atmosphere (10 km from Pitești)
- **the Bran Castle** - world-famous for **Dracula's** legend (at about 100 km)

Curtea de Argeș Monastery



Vidraru/ Transfăgărășan



Bran Castle



Golești Museum



Accommodation & Restaurants & Cafés

You may either taste the traditional or the international cuisine in Pitești

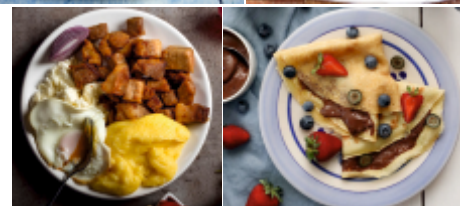
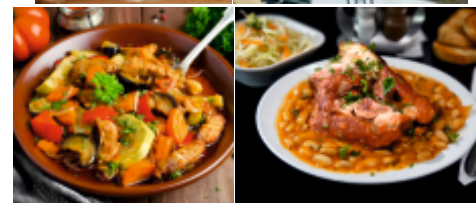
Casa Argeșeană provides delicious Romanian traditional meals. The restaurant usually organizes live-music evenings on Thursday, Friday and Saturday. (<http://casaargeseana.ro>)
Hanul Românesc offers daily diverse menus, meals prepared under the guidance of master chefs awarded at various national and international competitions, artistic evenings performed by Romanian folk musicians. (<http://hanul-romanesc.ro/enindex.htm>)

La Tuciuri is the place where you can taste Romanian traditional (lamb, pork, beef, chicken, fish dishes) in a traditional atmosphere. (<http://latuciuri.ro>)

Cornul Vânătorului offers the tastiest traditional game food and international cuisine within the splendour of nature and the forest murmur, all of them sprinkled with exquisite wines from the well-known Romanian vineyards. (<http://www.cornulvanatorului.ro/cornul-vanatorului-2>)

- **VICTORIA HOTEL ****** (Web: <http://victoriahotel.ro>)
- **MUNTENIA HOTEL ****** (Web: <http://www.hoteluripitesti.ro/ro/hotel-muntenia.php>)
- **CASA TEILOR ***** (Web: <https://casateilor.ro/>)
- **HOTEL YAKY ****** (Web: <https://www.facebook.com/yakyceneter.ro/>)
- **ARGEȘ HOTEL ***** (Web: <http://www.hotelarges.ro>)
- **CELLY HOTEL ***** (Web: <https://www.hotelcelly.ro/>)

Besides the student hostels, there are a number of accommodation options to cater for different lifestyles and budgets. The prices start with **200 €/ month** for rent. Check the real estate agents: imobiliare.ro/agentiipitesti





Bibliotheque - Coffee, Wine & Food Bistro

In an interwar house, in the city centre, it welcomes its guests from dawn till night. The terrace, the friendly interior, with brick-clad walls, become too small around noon and in the evening. The menu includes different traditional and international dishes (grilled salmon filet, a Giboulet à la Chef of cherries, with zabaglione and almond flakes).

<https://www.facebook.com/BibliothequePitesti>



Mansion Pub is warm, hospitable and elegant, a traditional place where you can quench your thirst with a beer or a wine of noble origin or, better yet, if you are hungry, you will find delicious food on everyone's appetite. You'll also enjoy thematic parties every weekend.
<https://www.mansion-pub.ro/en/>

The Orient Lounge

(<https://www.facebook.com/TheOrientLounge/>),

Restaurant Sultana

(<https://www.facebook.com/restaurantsultana/>)

and **Nazar Restaurant Pitești** offer Turkish food.

(<https://www.facebook.com/restaurantnazar/>)

The Great Chinese Restaurant is the only restaurant where you can enjoy Asian food.

(<https://restaurantchinezescpitesti.ro/>)

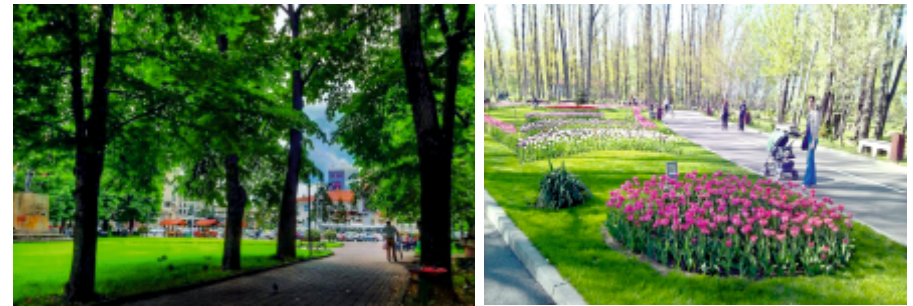
The Real Greek Pitești provides authentic Greek Food.

<https://www.facebook.com/TheRealGreekPitesti>



7

Leisure time

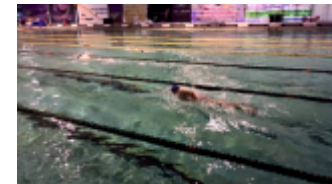


Being in Pitești means discovering

- **a city of entertainment:** Pitești Philharmonic, County Museum, the first digital Planetarium in Romania for virtual astronomy education, Cultural Centre, Alexandru Davila Theatre, Art Gallery, Student's House, Children's Palace.
- **a city preserving the taste of nature:** Trivale Forest, Expo Park, Strand Park, Tineretului Park, Lunca Argeșului Park, the Zoo.
- **a city of sports performance:** Olympic Swimming Pool, Nicolae Dobrin Stadium, Swimming, Skating, Tennis and Football Complex, Argeș Sports Museum.

o **Leisure centres:**

- **Trivale Swimming pool**, an outdoor swimming pool with modern facilities
(<https://www.facebook.com/terasamagic.trivale/>)
- **Magic Swimming pool**
(<https://www.magicgt.ro/piscina-coffe-lounge-magic-gt-pitesti/>)
- **Royal Park** was created as a Centre for the sports fans with many facilities: horseback riding; cycling; rollers; kangoo jumps; table tennis; swimming; private beach.
(<http://royalpark.ro/>)
- **Shaker Club Budeasa** - beach with private pool and seating area with canopies, massage and jacuzzi.
(<https://www.facebook.com/shakerbeachbudeasa/>)
- **Sala Sporturilor/ Sports` Centre**
(<https://www.facebook.com/centruldetineret/?rf=1785617271737717>)



- **Nicolae Dobrin Municipal Stadium**
(https://www.facebook.com/StadionNicolaeDobrin/about/?ref=page_internal)
- **The Olympic Pool**
- **Andaluz Riding Centre**
(<https://www.facebook.com/Andaluz.echitatie/>)
- **Victoria Spa Wellness** (<https://victoriahotel.ro/spa/>)
- **Verity SPA Health Spa**
(<https://www.facebook.com/VeritySpaPitesti/>)
- **Impact Fitness Studio Pitești**
(<https://www.facebook.com/impactfitness2017/>)
- **Xtreme Fitness Pitești**
(<https://www.xtremefitness.ro/abonamente/>)



8 Shopping cents and souvenir shops

- **Mihai Eminescu**

Bookshop (<http://librariaeminescupitesti.ro/>)

- **Cărturești Pitești**

Bookshop (<https://vivo-shopping.com/ro/pitesti>)

- **Diverta Pitești**

- **Bookshop** (<https://vivo-shopping.com/ro/pitesti>)

- **Mon Cher Bookshop**
(<https://www.facebook.com/LibrarieMonCher/>)



If you are a shopping addict, you should go to...

- **Jupiter City Shopping Centre:** the largest mall in Pitești and Argeș County, the place where every visit turns into a complete experience, an ideal destination for shopping! (<https://www.jupitercity.ro/>)
- **VIVO Shopping:** the host of well-known nationally and internationally brands, with direct access to the supermarket, pharmacies, clothing, communications, restaurants and cafes, etc.). (<https://vivo-shopping.com/ro/pitesti>)
- **Auchan Hypermarket** (www.auchan.ro)
- **Carrefour** (<https://www.jupitercity.ro/>)
- **Lidl** (www.lidl.ro)

Get involved in the community!

- **Erasmus Student Network Pitești** is an association helping incoming on outgoing students, by providing information and organizing different indoor and outdoor activities (www.facebook.com/esn.pitesti)
- **AIESEC Pitești** - a voluntary organization that wants to develop the potential of young leaders of society. (<http://aiesecpitesti.blogspot.com/>)
- **Zimbrul Carpatin Association** is a group of young volunteers, nature lovers who are interested in protecting the environment. Therefore, they organize introductory workshops in mountain walking, sports tourism competitions and mountain education. (<https://zimbrul-carpatin.ro/>)
- **Save the Children Association** is a ONG dedicated to help children (<https://www.facebook.com/SalvatiCopiiiArges/>)
- **Romanian Red Cross Association** (<https://crucearosie.ro/>)



Health - Medical services

Your health is very important! So, you should know some things about what you might do if you are not feeling well.

- For medical emergencies **CALL 112**.
- Medical services are provided by:
- the County Hospital
- the Children's Hospital
- the Infectious Diseases Hospital

○ Private clinics

- **Regina Maria Polyclinic**
(<https://www.reginamaria.ro/clinici/pitesti>)
- **Sanovital** Centre: (<https://sanovital.ro/>)
- **SANTE Clinic**
(<https://www.clinica-sante.ro/sante-pitesti-eliade/>)
- **Synevo Pitești**
(<https://www.synevo.ro/locatii/centru-recoltare-pitesti-2-teiuleanu/>)
- **Solomed Pitești**
(<https://www.solomed.ro/>)
- **Muntenia Hospital**
(<https://www.munteniahospital.ro/medlife>)

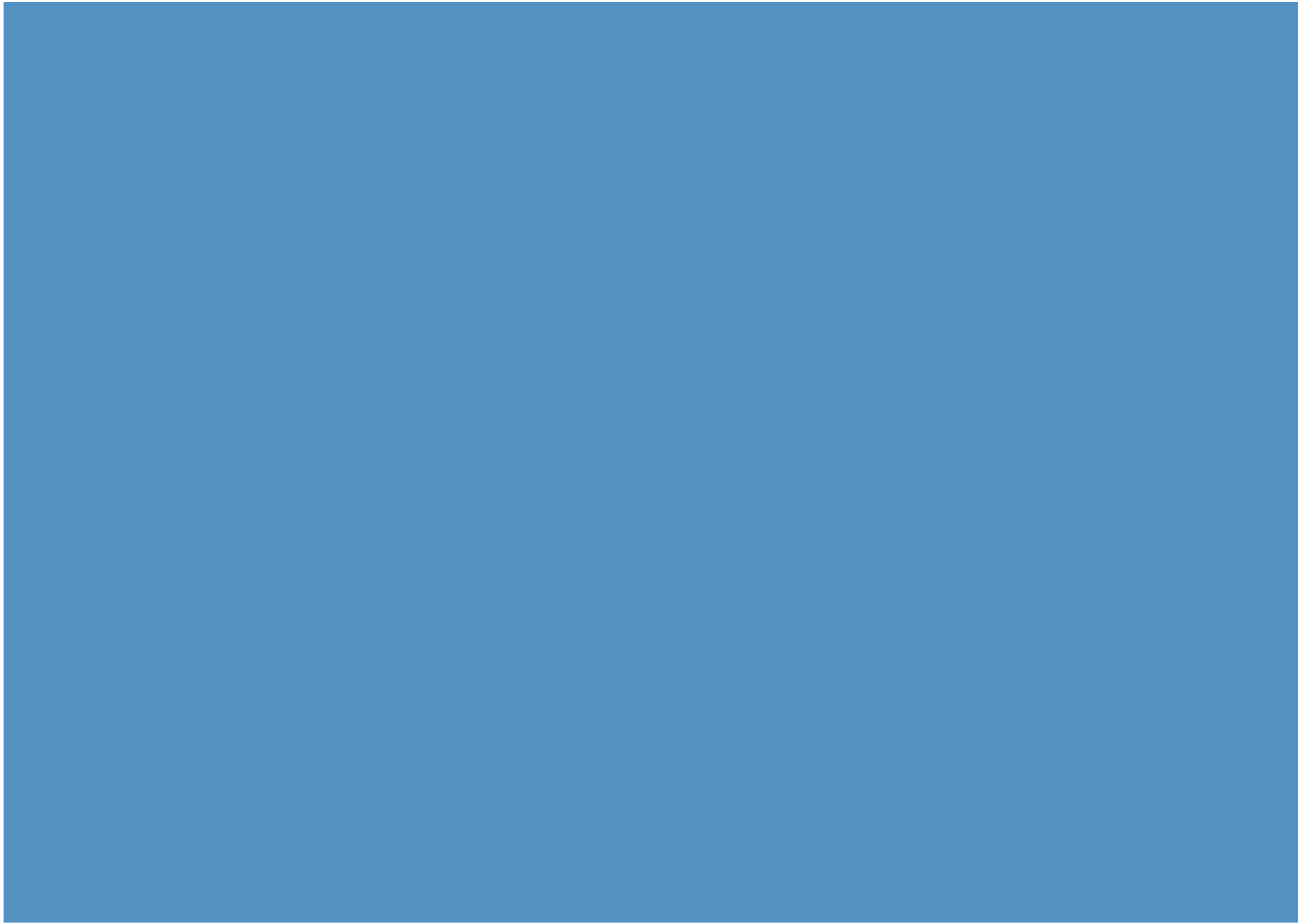


Pharmacies

Pharmacies are open from **8.00** am to **10.00** pm from Monday to Saturday, but there is at least a non-stop pharmacy in Pitești.

Medical Insurance

The students from the EU countries, who benefit from Erasmus mobility grants or non-EU students, have the insurance conditions stipulated in the application study documents.





UPIT

Centre for International Relations

2021

Address:

Târgu din Vale 1, Room No. 133 - 110040, Pitești, Romania
Phone/ Fax: +40 348 453 102
E-mail: international@upit.ro

Web: <https://international.upit.ro>



official_upit



Official_Upit



InternationalRelations.UPIT

Please note, this prospectus was prepared and published during the COVID-19 pandemic, and thus, at a time of great uncertainty. The University has made every effort to ensure that the information contained herein was accurate at the time of the publication. For the most accurate and up-to-date information, you are advised to check the University website and/or to get in touch with our staff. The prospectus is intended as a general guide and forms no part of any contract between you and the University.